

**TB8100** base station

# Alarm Center User's Manual



MB8100-80-00-806  
June 2003



# Contents

---

Alarm Center .....	3
Remote Alarm Monitoring .....	3
Status Emails .....	3
Running Alarm Center .....	4
Closing the Main Window .....	4
Disabling and Enabling Alarm Center .....	4
Exiting Alarm Center .....	4
Responding to New Alarms .....	5
Viewing Alarm Details .....	5
Configuring Alarm Center .....	6



# Alarm Center

---

The Tait TB8100 Alarm Center application automates the remote monitoring of base stations. It can display a list of recent alarms and send status emails to technicians, for example. Status emails contain the current status of all alarms, other important information, and the alarm log.

Alarm Center runs on a PC, usually in the background. The PC should be permanently on, so that Alarm Center can receive alarms at any time. You can use the same PC for the Service Kit and for Alarm Center but this is not recommended.



When Alarm Center is running, a Tait icon appears in the system tray. Double-click the icon and the main window appears. Right-click the icon and a menu pops up. This gives you access to the Alarm Center's options.

## Remote Alarm Monitoring

Remote alarm monitoring with Alarm Center works like this. When a fault develops in a base station, that base station's Task Manager instructs it to dial up the Alarm Center and send its alarm log. (Base stations do not send individual alarms. Some faults cause a cluster of alarms and if these were sent one by one, this would tie up the modem link and could prevent important alarms from other base stations getting through.)

Alarm Center receives the alarm log, extracts those alarms that were not in a previous log and saves them to its own database. It also pops up a message to let you know that alarms have arrived. When you open Alarm Center, you see all alarms received from the various base stations.

For remote alarm monitoring to work, you must set up communications between your system of base stations and the Alarm Center. Each site installation needs a communications link back to the Alarm Center (for example, a telephone line and dial-up modems). For details on setting up these links, see *TN-742 Remotely Monitoring and Configuring the Tait TB8100*. Each base station must be licensed for alarm reporting and configured using the Service Kit, so that it sends its alarm logs to the Alarm Center and so that its Task Manager knows when to tell the base station to send its alarm log.

## Status Emails

The sending of emails containing base station status information works like this. A base station's Task Manager instructs it to dial up the Alarm Center PC and send its current status message.

Alarm Center receives the status message (which is plain text), uses it to create an email, then sends it to any SMTP mail server via a connection that is maintained using the Alarm Center PC's Internet Explorer program.

Status emails require the same communications setup as remote alarm monitoring. Each base station must have an Alarm Reporting license and be configured using the Service Kit. This configuration provides:

- Task Manager statements defining when emails are sent
- The information needed for the connection to the Alarm Center
- Details for the email such as who to send the email to, the address of the SMTP server, and what to put in the Subject and first line.

For detailed information on how to set up the Alarm Center PC and the base stations for remote monitoring via email, see *TN-742 Remotely Monitoring and Configuring the Tait TB8100* and the Service Kit online Help or user's manual.

## Running Alarm Center

It is best to configure your PC's operating system so that it starts Alarm Center automatically. Then Alarm Center is running whenever your PC is on. However, you can manually start Alarm Center. Once Alarm Center has started, it communicates with the PC modem and is ready to receive alarms.

### To manually start Alarm Center

- Select Start > Tait Applications > TB8100 Service Kit > Alarm Center.



The main window pops up and the Alarm Center icon appears in the system tray.

### Closing the Main Window

If you want to keep Alarm Center out of the way so that you can work on other things, close its main window. This does not affect Alarm Center's operation.

#### To close the main window

1. Click the Tait icon in the top left-hand corner of the window. A menu pops up.
2. Click Close.

### Disabling and Enabling Alarm Center

You can disable the Alarm Center application. Disabling leaves Alarm Center running but prevents it from receiving alarm logs. This is useful when you are setting up or testing a base station; many alarms will be generated and you don't want to keep track of them.

#### To disable Alarm Center

1. Right-click the Alarm Center icon in the system tray.
2. From the pop-up menu, select Disable.



The Alarm Center icon is now crossed out.

#### To enable Alarm Center

1. Right-click the crossed-out Alarm Center icon.
2. From the pop-up menu, select Enable.

The cross over the Alarm Center icon disappears.

### Exiting Alarm Center

You can shut down the Alarm Center application if you no longer want it to operate on your PC.

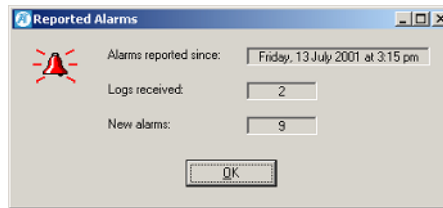
#### To exit Alarm Center

1. Right-click the Alarm Center icon in the system tray.
2. From the pop-up menu, select Exit.

The Alarm Center icon disappears from the system tray. If the main application window is open, it closes.

## Responding to New Alarms

When an alarm log arrives, Alarm Center pops up a message to let you know. If more logs are received, the message display is updated.



The **Alarms reported since** box tells you when the first log arrived. The other boxes tell you how many logs have been received and how many new alarms are in those logs. An alarm is new if it was not contained in a previous log that Alarm Center received.

### To view the new alarms

- Click OK. The main window opens so that you can see the alarms. Each row in this dialog box provides information about an alarm.

## Viewing Alarm Details

The main Alarm Center window lets you view details about the alarms that have been received and save them to a text file.

Date & Time	Base Station	Module	Serial Number	Reported Alarm
19/05/03 17:07:59:200	ALT Base Station 50W	Reciter	18001244	Unbalanced line input low
19/05/03 17:08:02:320	ALT Base Station 50W	Reciter	18001244	Balanced line input low
19/05/03 17:08:02:326	ALT Base Station 50W	Reciter	18001244	RSSI low
21/05/03 11:16:13:452	ALT Base Station 100W	Power Amplifier		Forward power low
21/05/03 11:16:13:454	ALT Base Station 100W	Power Amplifier		Current imbalance
21/05/03 11:16:58:640	ALT Base Station 100W	Reciter	18001244	RSSI low
21/05/03 11:16:16:452	ALT Base Station 100W	Reciter	18001244	Balanced line input low
21/05/03 11:16:16:454	ALT Base Station 100W	Reciter	18001244	Unbalanced line input low
21/05/03 11:17:01:640	ALT Base Station 100W	Reciter	18001244	Balanced line input low
21/05/03 14:09:09:682	ALT Base Station 100W	Power Amplifier		PA final 1 over temperature
21/05/03 14:09:09:684	ALT Base Station 100W	Power Amplifier		PA final 2 over temperature
21/05/03 14:09:09:684	ALT Base Station 100W	Power Amplifier		PA driver over temperature
21/05/03 14:09:10:576	ALT Base Station 100W	Power Management Unit	18001010	Mains supply failed
21/05/03 14:28:56:272	ALT Base Station 100W	Reciter	18001244	Balanced line input low
23/05/03 14:28:56:280	ALT Base Station 100W	Reciter	18001244	Unbalanced line input low
23/05/03 14:28:58:272	ALT Base Station 100W	Reciter	18001244	Balanced line input low
23/05/03 14:28:58:280	ALT Base Station 100W	Reciter	18001244	RSSI high
25/05/03 15:02:36:316	ALT Base Station 100W	Reciter	18001244	Unbalanced line input low
25/05/03 15:17:56:890	ALT Base Station 100W	Reciter	18001244	RSSI low
25/05/03 14:29:00:272	ALT Base Station 100W	Reciter	18001244	Balanced line input low
27/05/03 14:29:00:280	ALT Base Station 100W	Reciter	18001244	Exciter synthesiser out of lock
27/05/03 15:02:38:316	ALT Base Station 100W	Power Amplifier		Forward power low
27/05/03 15:17:58:890	ALT Base Station 100W	Power Amplifier		Current imbalance
28/05/03 14:29:01:272	ALT Base Station 100W	Reciter	18001244	Receiver synthesiser out of lock
28/05/03 14:29:01:280	ALT Base Station 100W	Reciter	18001244	Exciter synthesiser out of lock

### Columns

The columns in the dialog box provide information about each alarm.

Date/Time

When the alarm occurred. The date and time are displayed in the format defined in the regional settings of the PC's operating system.

Base Station

The name of the base station where the alarm occurred.

Module	The module that registered the alarm state.
Serial Number	The number uniquely identifying the module.
Reported Alarm	The name of the alarm. This name is provided by Alarm Center based on the alarm number that it received.

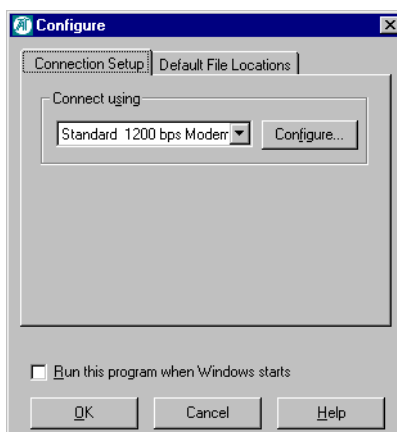
### **Command Buttons**

A row of buttons along the bottom of the dialog box provide options for dealing with the alarm logs.

Save to File	Lets you save the currently displayed alarm list to a text file in comma-separated format. To append the list to an existing file, specify the name of that file.
Clear List	Deletes all entries in Alarm Center’s database of alarms and clears the on-screen display so that you can concentrate on future alarms.
Configure	Lets you configure the Alarm Center (see <a href="#">“Configuring Alarm Center”</a> on page 6 for more information).

## **Configuring Alarm Center**

The **Configure** dialog box lets you modify Alarm Center settings and define the communication parameters it uses.



### **To configure Alarm Center**

1. Right-click the Alarm Center icon, then select Configure from the pop-up menu. The Configure dialog box appears.
2. To modify the communications parameters, click **Configure**. The parameter settings must be compatible with the base station modems that will be communicating with the Alarm Center modem. For information about the dialog that appears, see your operating system documentation.
3. To have Alarm Center start automatically when you start your PC (recommended), select the **Run this program when Windows starts** check box.



4. If desired, you can specify a different folder for storing text files of the alarms.
  - a. Click the **Default File Locations** tab.
  - b. Click the button alongside the **Log files folder** box and select a suitable folder. (When you click Save to File, Alarm Center will default to this folder.)
5. Click OK to confirm your changes and close the dialog box.



# Index

---

## A

### alarm

- notification of [5](#)
- saving to file [6](#)
- viewing details [5](#)

### Alarm Center

- automatic starting [4](#)
- closing [4](#)
- configuring [6](#)
- disabling [4](#)
- enabling [4](#)
- monitoring alarms [3](#)
- options [3](#)
- shutting down [4](#)
- starting [4](#)
- starting automatically [6](#)

### alarm log [5](#)

- location of [7](#)

### Alarm Reporting license [3](#)

### automatic starting [4](#)

## C

### communications parameters [6](#)

### configuration [6](#)

### Configure dialog box [6](#)

## D

### disabling Alarm Center [4](#)

## E

### email [3](#)

- addressee [3](#)
- configuration of [3](#)
- contents of [3](#)
- license required [3](#)

### setting up [4](#)

### enabling Alarm Center [4](#)

### exiting Alarm Center [4](#)

## I

### icon crossed out [4](#)

## L

### license required [3](#)

## M

### monitoring alarms [3](#)

## O

### options [3](#)

## R

### Reported Alarms message [5](#)

### running Alarm Center automatically [6](#)

## S

### serial port

- configuring [6](#)

### shutting down Alarm Center [4](#)

### starting Alarm Center [4](#)

### status email [3](#)

- contents of [3](#)

## V

### viewing alarm details [5](#)

